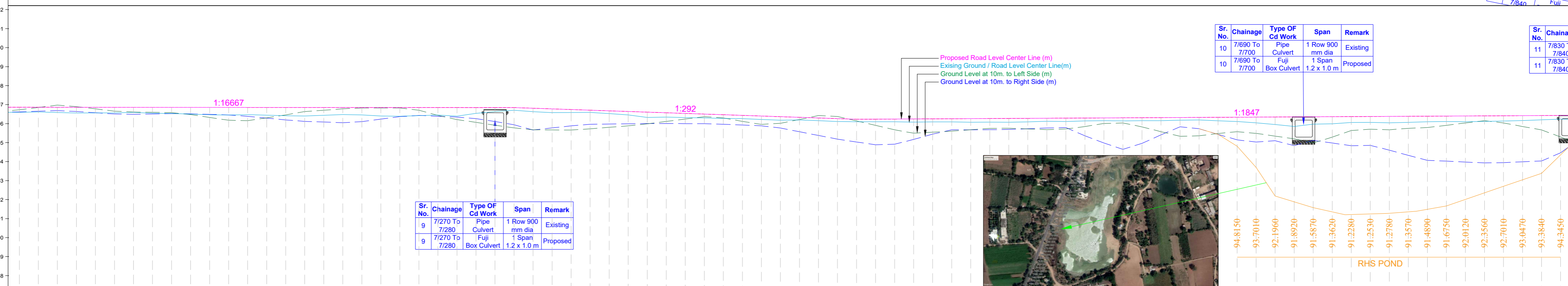


PLAN



PROFILE

Chainage	Existing Levels OnLHS From Center to 10.00 mt.	Existing Levels OnRHS From Center to 10.00 mt.	Super Elevation Diagram	Hor. Curve Details on PCL	Existing Levels on PCL	Prop. Levels on PCL	Prop. Ver. Diagram on PCL	Filling	Cutting
-7020.00	96.727	96.614			96.594	96.614		0.265	
-7030.00	96.850	96.650			96.613	96.850		0.245	
-7040.00	96.972	96.682			96.582	96.857		0.275	
-7050.00	96.895	96.637			96.559	96.857		0.298	
-7060.00	96.776	96.569			96.565	96.856		0.291	
-7070.00	96.654	96.505			96.566	96.856		0.290	
-7080.00	96.608	96.486			96.589	96.855		0.266	
-7090.00	96.593	96.505			96.544	96.854		0.310	
-7100.00	96.576	96.524			96.531	96.854		0.323	
-7110.00	96.478	96.514			96.502	96.853		0.351	
-7120.00	96.326	96.485			96.460	96.853		0.393	
-7130.00	96.176	96.455			96.451	96.852		0.401	
-7140.00	96.151	96.382			96.470	96.851		0.381	
-7150.00	96.307	96.289			96.447	96.851		0.404	
-7160.00	96.458	96.192			96.413	96.850		0.437	
-7170.00	96.634	96.118			96.399	96.850		0.451	
-7180.00	96.700	96.082			96.438	96.849		0.411	
-7190.00	96.776	96.047			96.474	96.848		0.374	
-7200.00	96.825	96.102			96.454	96.848		0.394	
-7210.00	96.825	96.234			96.398	96.847		0.449	
-7220.00	96.825	96.366			96.388	96.847		0.459	
-7230.00	96.702	96.429			96.418	96.846		0.428	
-7240.00	96.432	96.381			96.448	96.845		0.397	
-7250.00	96.212	96.346			96.393	96.845		0.452	
-7260.00	96.063	96.259			96.538	96.844		0.306	
-7270.00	95.914	96.107			96.634	96.844		0.210	
-7280.00	95.775	95.939			96.703	96.843		0.140	
-7290.00	95.675	95.664			96.625	96.809		0.184	
-7300.00	95.667	95.772			96.578	96.775		0.197	
-7310.00	95.659	95.881			96.582	96.740		0.158	
-7320.00	95.726	95.962			96.586	96.706		0.120	
-7330.00	95.804	95.977			96.524	96.672		0.148	
-7340.00	95.882	95.992			96.458	96.638		0.180	
-7350.00	95.988	96.001			96.326	96.603		0.277	
-7360.00	96.113	96.004			96.344	96.569		0.225	
-7370.00	96.240	95.999			96.315	96.535		0.220	
-7380.00	96.364	95.995			96.297	96.501		0.204	
-7390.00	96.301	95.966			96.276	96.467		0.191	
-7400.00	96.117	95.926			96.262	96.432		0.170	
-7410.00	95.958	95.885			96.216	96.398		0.182	
-7420.00	96.017	95.767			96.182	96.364		0.182	
-7430.00	96.215	95.571			96.192	96.330		0.138	
-7440.00	96.422	95.375			96.151	96.295		0.144	
-7450.00	96.373	95.182			96.108	96.261		0.153	
-7460.00	96.141	95.032			96.097	96.227		0.130	
-7470.00	95.905	94.887			96.096	96.232		0.136	
-7480.00	95.674	94.914			96.094	96.238		0.144	
-7490.00	95.496	95.167			96.075	96.243		0.168	
-7500.00	95.545	95.445			96.089	96.249		0.160	
-7510.00	95.604	95.673			96.090	96.254		0.164	
-7520.00	95.677	95.675			96.069	96.259		0.190	
-7530.00	95.749	95.678			96.075	96.265		0.190	
-7540.00	95.758	95.690			96.070	96.270		0.200	
-7550.00	95.720	95.729			96.089	96.276		0.187	
-7560.00	95.683	95.769			96.119	96.281		0.162	
-7570.00	95.718	95.793			96.112	96.287		0.175	
-7580.00	95.844	95.556			96.140	96.292		0.152	
-7590.00	96.008	94.980			96.153	96.297		0.144	
-7600.00	96.034	94.646			96.140	96.303		0.163	
-7610.00	95.827	94.961			96.155	96.308		0.153	
-7620.00	95.576	95.406			96.154	96.314		0.160	
-7630.00	95.332	95.833			96.180	96.319		0.139	
-7640.00	95.356	95.731			96.191	96.324		0.133	
-7650.00	95.479	95.433			96.145	96.330		0.185	
-7660.00	95.575	95.145			96.112	96.335		0.223	
-7670.00	95.485	95.029			96.041	96.341		0.300	
-7680.00	95.342	95.100			95.954	96.346		0.392	
-7690.00	95.199	94.840			95.849	96.352		0.503	
-7700.00	94.984	95.120			95.968	96.357		0.389	
-7710.00	95.287	94.978			95.990	96.362		0.372	
-7720.00	95.636	94.836			96.062	96.368		0.306	
-7730.00	95.707	94.855			96.065	96.373		0.308	
-7740.00	95.674	94.604			96.043	96.379		0.336	
-7750.00	95.751	94.330			96.066	96.384		0.318	
-7760.00	95.791	94.063			96.096	96.389		0.293	
-7770.00	95.910	94.029			96.111	96.395		0.284	
-7780.00	96.033	93.979			96.098	96.400		0.302	
-7790.00	96.156	93.930			96.116	96.406		0.290	
-7800.00	96.036	93.948			96.134	96.411		0.277	
-7810.00	95.847	93.992			96.163	96.417		0.254	
-7820.00	95.667	94.035			96.195	96.422		0.227	
-7830.00	95.297	94.460			96.238	96.427		0.189	