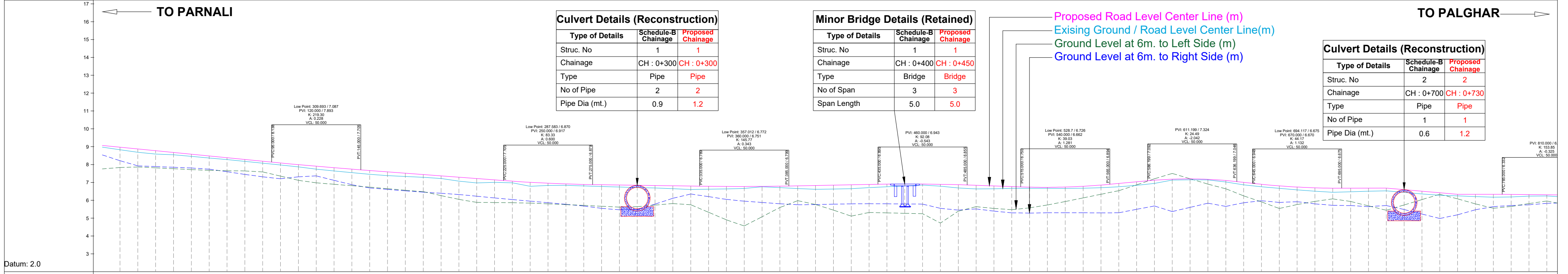


PLAN



PROFILE

Stationing	Cutting	Filling	Prop. Levels on PCL	Existing RL OnPCL	Extra Widening Diagram & Schedule of TCS	EGL AT 6.00 M FROM CL LHS	EGL AT 6.00 M FROM CL RHS	Hor. Curve Details on PCL	Prop. Ver. Diagram on PCL	Super Elevation Diagram	Chainage				
0+00		0.090	9.068	8.978	TCS = 2E (OVERLAY & CONCENTRIC WIDENIN) 0/00 TO 2/880	7.759	8.543	Ls=30.00 R=1000.00 Ls=30.00 R=1200.00 R=400.00	-0.98% VCL=50.00 -0.75% VCL=50.00 -0.15% VCL=50.00 0.19% VCL=50.00 -0.35% VCL=50.00 0.93% VCL=50.00 -1.14% VCL=50.00 0.02% -0.67% -0.01% VCL=50	1.80%	0+00				
10+00		0.141	8.970	8.829		7.833	8.216				8.216				10+00
20+00		0.183	8.872	8.689		7.866	7.925				7.866				20+00
30+00		0.184	8.774	8.590		7.815	7.887				7.815				30+00
40+00		0.131	8.676	8.545		7.766	7.848				7.766				40+00
50+00		0.118	8.578	8.460		7.717	7.809				7.717				50+00
60+00		0.115	8.481	8.366		7.672	7.741				7.672				60+00
70+00		0.103	8.383	8.280		7.654	7.601				7.654				70+00
80+00		0.105	8.285	8.180		7.643	7.448				7.643				80+00
90+00		0.108	8.187	8.079		7.590	7.314				7.590				90+00
100+00		0.116	8.090	7.974		7.354	7.207				7.354				100+00
110+00		0.127	7.997	7.870		7.116	7.313				7.116				110+00
120+00		0.164	7.907	7.743		6.975	7.365				6.975				120+00
130+00		0.179	7.823	7.644		6.895	7.118				6.895				130+00
140+00		0.198	7.743	7.545		6.816	6.871				6.816				140+00
150+00		0.213	7.668	7.455		6.735	6.689				6.735				150+00
160+00		0.212	7.593	7.381	6.647	6.610	6.647				160+00				
170+00		0.183	7.518	7.335	6.564	6.526	6.564				170+00				
180+00		0.154	7.443	7.289	6.480	6.455	6.480				180+00				
190+00		0.147	7.367	7.220	6.263	6.391	6.263				190+00				
200+00		0.220	7.282	7.072	6.051	6.321	6.051				200+00				
210+00		0.247	7.217	6.970	5.883	6.229	5.883				210+00				
220+00		0.137	7.142	6.905	5.872	6.131	5.872				220+00				
230+00		0.088	7.069	6.981	5.862	6.040	5.862				230+00				
240+00		0.221	7.006	6.785	5.841	5.950	5.841				240+00				
250+00		0.127	6.954	6.827	5.799	5.863	5.799				250+00				
260+00		0.079	6.916	6.837	5.757	5.777	5.757				260+00				
270+00		0.084	6.888	6.804	5.716	5.677	5.716				270+00				
280+00		0.100	6.872	6.772	5.666	5.547	5.666				280+00				
290+00		0.116	6.857	6.741	5.617	5.469	5.617				290+00				
300+00		0.130	6.842	6.712	5.645	5.481	5.645				300+00				
310+00		0.138	6.826	6.688	5.730	5.794	5.730				310+00				
320+00		0.164	6.811	6.647	5.816	6.111	5.816				320+00				
330+00		0.194	6.796	6.602	5.750	6.382	5.750				330+00				
340+00		0.163	6.783	6.620	5.330	6.204	5.330				340+00				
350+00		0.138	6.774	6.636	4.904	6.049	4.904				350+00				
360+00		0.111	6.772	6.661	4.564	5.949	4.564				360+00				
370+00		0.024	6.778	6.754	5.077	5.878	5.077				370+00				
380+00		0.084	6.791	6.707	5.597	5.802	5.597				380+00				
390+00		0.150	6.809	6.659	5.977	5.749	5.977				390+00				
400+00		0.211	6.828	6.617	5.762	5.760	5.762				400+00				
410+00		0.219	6.847	6.628	5.450	5.781	5.450				410+00				
420+00		0.216	6.866	6.650	5.111	5.800	5.111				420+00				
430+00		0.177	6.885	6.708	5.317	5.808	5.317				430+00				
440+00		0.147	6.903	6.756	5.294	5.801	5.294				440+00				
450+00		0.106	6.911	6.805	5.270	5.794	5.270				450+00				
460+00		0.056	6.909	6.853	5.247	5.787	5.247				460+00				
470+00		0.108	6.895	6.787	4.723	5.548	4.723				470+00				
480+00		0.183	6.871	6.688	5.390	5.450	5.390				480+00				
490+00		0.202	6.838	6.636	5.641	5.516	5.641				490+00				
500+00		0.162	6.803	6.641	5.545	5.393	5.545				500+00				
510+00		0.100	6.767	6.667	5.473	5.297	5.473				510+00				
520+00		0.067	6.736	6.669	5.573	5.284	5.573				520+00				
530+00		0.057	6.726	6.669	5.736	5.302	5.736				530+00				
540+00		0.080	6.742	6.662	5.929	5.303	5.929				540+00				
550+00		0.107	6.783	6.676	6.133	5.299	6.133				550+00				
560+00		0.145	6.851	6.706	6.336	5.295	6.336				560+00				
570+00		0.183	6.941	6.758	6.538	5.299	6.538				570+00				
580+00		0.195	7.034	6.839	6.863	5.494	6.863				580+00				
590+00		0.177	7.124	6.947	7.203	5.680	7.203				590+00				
600+00		0.051	7.181	7.130	7.504	5.371	7.504				600+00				
610+00		0.053	7.197	7.144	7.204	5.604	7.204				610+00				
620+00		0.031	7.172	7.141	6.904	5.838	6.904				620+00				
630+00		0.082	7.107	7.025	6.645	5.658	6.645				630+00				
640+00		0.137	7.004	6.867	6.250	5.860	6.250				640+00				
650+00		0.138	6.895	6.757	5.909	5.973	5.909				650+00				
660+00		0.139	6.807	6.668	5.541	5.881	5.541				660+00				
670+00		0.161	6.741	6.580	5.763	5.921	5.763				670+00				
680+00		0.192	6.698	6.506	5.935	5.800	5.935				680+00				
690+00		0.231	6.677	6.446	6.079	5.718	6.079				690+00				
700+00		0.201	6.676	6.475	5.932	5.701	5.932				700+00				
710+00		0.173	6.678	6.505	5.687	5.645	5.687				710+00				
720+00		0.150	6.680	6.530	5.439	5.704	5.439				720+00				
730+00		0.152	6.594	6.442	5.739	5.484	5.739				730+00				
740+00		0.155	6.507	6.352	6.039	5.229	6.039				740+00				
750+00		0.139	6.421	6.282	6.395	4.980	6.395				750+00				
760+00		0.090	6.334	6.244	6.077	5.190	6.077				760+00				
770+00		0.125	6.333	6.208	5.796	5.470	5.796				770+00				
780+00		0.157	6.332	6.175	5.554	5.645	5.554				780+00				
790+00		0.141	6.330	6.189	5.651	5.705	5.651				790+00				
800+00		0.090	6.322	6.232	5.818	5.747	5.818				800+00				
810+00		0.070	6.309	6.239	5.958	5.828	5.958				810+00				

CLIENT :- 	INDEPENDENT ENGINEER 	DESIGN CONSULTANT :- 	CONCESSIONAIRE :- PALGHAR ROAD PROJECT PRIVATE LIMITED Regd. Office: 2nd Floor, Mangalmurti Complex, Near Mahagujarat Hospital, College Road, Nadiad, District Kheda, Gujarat, India, 387001. Tel: +91 268 2522020 Fax: +91 0268 2522200	PROJECT:- Construction of Two Lanning with Unpaved Shoulders to Parnali - Panch
----------------------	---------------------------------	---------------------------------	---	--